

# MP3/VOICE RECORDING SUNGLASSES

INSTRUCTION MANUAL

## TABLE OF CONTENT

I GENERAL DESCRIPTIONS-----	1
Basic Function-----	1
Accessories-----	3
II OPERATION-----	4
Button function overview-----	4
Function light overview-----	5
Power on/off-----	6
Mode switch-----	6
Playing MP3 music-----	7
Playing voice recording-----	7
Recording shortcut-----	8
Volume & music / recording control-----	8
Deleting music/voice recording-----	8
PC connection-----	9
Battery power indicator -----	9
Battery recharging-----	10
III INSTALLATION-----	11
System requirements-----	11

USB connection-----	11
Installation guide-----	12
USB Disk Partition and Encrypt-----	18
Firmware upgrade-----	22
IV CAUTIONS-----	23
V HELPFUL TIPS-----	24
VI PRODUCT SPECIFICATIONS-----	26

# I GENERAL DESCRIPTIONS

## Basic Functions

1. Playable music format: MP3/ WMA/ ADPCM
2. USB2.0 (Full Speed) interface
3. Portable storage disk USB2.0 (Full Speed)
4. Playing function: Sequence, Repeat Random, Pause, Resume
5. Delete (current track/ voice recording)
6. Built in Microphone: ADPCM voice recording
7. Stereo earphone
8. Automatically detecting of battery voltage and power indicator
9. Power saving:
  - ※Automatically power off if no button pushed in 2 minutes under pause status
  - ※Automatically power off in 2 minutes when all tracks played
10. Battery: Rechargeable Li-ion battery (3.7V)
11. 4 LED lights:
  - POWER Light:
    - lights up / power on;
    - lights off / power off or no power

Flashing once persecond indicates 10% power remains;  
(also as USBindicator) :

lights up /in proper connection with PC.

MP3 Light (MP3):

Lights up /MP3 mode;

flashing once persecond / playingMP3 in Sequence;

flashing twice persecond / playingMP3 in RepeatRandom.

REC light (voice recording / playing):

lights up /playing mode of voice recording;

flashing once persecond / playingvoice recording;

flashing twice persecond / recording.

CHARGE light (recharging):

lights up /recharging;

lights off /recharging over.

12.5 buttons:

**ON/OFF** ---- power on/ power off/ play /pause

**REC/MODE** ---- recording /playing MP3

**V+ /▶▶** ---- increase volume/forward

**◀◀/V-** ---- decrease volume/reverse

**RANDOM/DEL** ---- play in random / delete

## Accessories

Below are the standard accessories in the packing, please check if they are complete



MP3 sunglasses



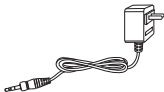
Instruction Manual



Installation CD

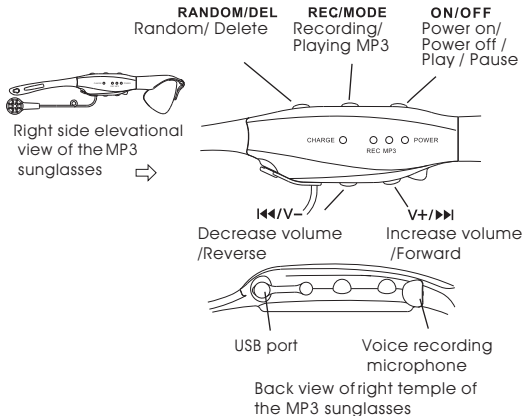


USB extension cable



Charging adapter (optional)

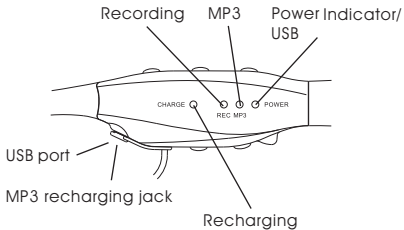
## II OPERATION



### Button function overview



Right side elevational  
view of the MP3  
sunglasses



## Function light overview



## Power on/power off

Press button **ON/OFF** momentarily---POWER light lights up, power on Please wait for 10 seconds until MP3 light lights up, the MP3 player is ready to play.

Press and hold button **ON/OFF** for 3 seconds-power off

※Note: default mode when power on

1) MP3 playing mode, MP3 light lights up.

2) Play the last track of voice recording

once motivated.

3) Play the last track of music once motivated.



## Mode switch

When MP3 playback or voice recording mode are paused or voice recording is stopped momentarily, press button to switch between the following modes:

Playing recording mode  
Press **REC/MODE** momentarily



Playing MP3 mode  
Press **REC/MODE** momentarily



MP3 sequence mode  
Press **RANDOM/DEL** momentarily



MP3 random mode  
Press **RANDOM/DEL** momentarily



### Playing MP3 music (under MP3 mode)

Press **ON/OFF** momentarily----play,  
MP3 light with flash

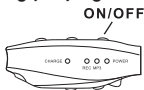
Press again **ON/OFF** momentarily----  
pause, MP3 lightlights up



### Playing voice recording (under recording playing mode)

Press **ON/OFF** momentarily----play,  
REC light with flash

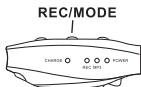
Press again **ON/OFF** momentarily----  
pause, REC lightlights up



## Recording shortcut (when voice or MP3 playback are paused)

Press **REC/MODE** and hold for 3 seconds---- recording starts, REC light flashing twice per second

Press again **REC/MODE** momentarily---- recording stops



## Volume & music/ track or voice recording control (under music playing or voice recording mode)

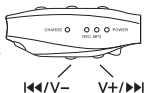
Press **V+ / ►►** and hold---- increase volume

Press **V+ / ►►** momentarily---- play next track (music/recording)

Press **◄◄ / V-** and hold---- decrease volume

Press **◄◄ / V-** momentarily (1) play previous track (music/recording) if pressed within 5 seconds after playing

(2) Replay the current track (music/recording) if pressed after playing 5 seconds



**RANDOM/DEL**

## Deleting music/ voice recording

Press and hold button **RANDOM/DEL** for 2 seconds

to delete the current track (music/ voice recording)



※ NOTE: Please connect with PC to delete the songs or recordings which are less than 2 seconds.

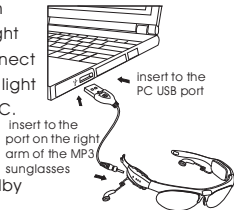
### PC connection

1. Turn on the MP3 player

2. Firstly connect the USB extension cable with the USB port on the right arm of the sunglasses, then connect with PC USB port. Lighted POWER light means in well connection with PC.

3. Flashing POWER light means data is being transferred (BUSY); lighted POWER light means standby status (idle).

4. When uploading/ downloading is completed, disconnect the sunglasses according to the PC requirement. Firstly pull away USB extension cable from PC, then disconnect USB extension cable from the USB port of sunglasses.



### Battery power indicator

Power indicator (POWER light):

lights up/full power

Flashing once per second indicates 10% power remains

Off/out of power and automatically power off

## Battery recharging

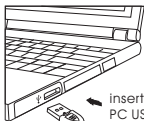
Recharging is needed when power indicator (POWER light) is flashing once per second or the light is off.

1. Connect the sunglasses to PC through USB cable or optional adaptor to AC power for recharging

2. Recharging light (CHARGE) lights up-under recharge

3. Recharging light (CHARGE) off-recharge finished

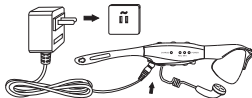
※NOTE: a) when recharging MP3 output voltage should be  $5V \pm 0.25V$ , output current  $\geq 500mA$ .



insert to the  
PC USB port

insert to the port on the right  
arm of the MP3 sunglasses

insert to 100v-240v AC power



insert to the  
port on the right  
arm of the MP3  
sunglasses

## III INSTALLATION OF DRIVER

### System requirements

IBM compatible personal computer

Pentium 166 MHzMMX or faster

Windows 98SE / ME / 2000 / XP

USB port (Universal Serial Bus)

Mac Os X / Mac Os 9.0

64MB RAM or more

20MB free hard-disk space or more

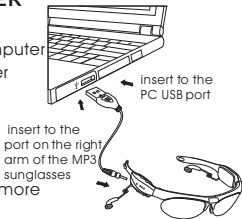
4 CD-ROM drive or more

Accessible to Internet (Recommended)

Note: User name has to be set as administrator under Windows 2000

### USB connection

1. USB port on your PC is used for sending files.
2. Check the USB port on your PC referring to its hardware instruction manual.
3. POWER light and CHARGE light are lighted when the MP3 sunglasses are connected to PC through USB port.
4. Under Win98 SE make sure the driver for the MP3 Player enclosed in the packing is successfully installed before connecting the product to PC.

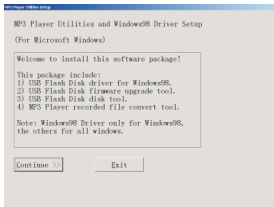


## Installation guide

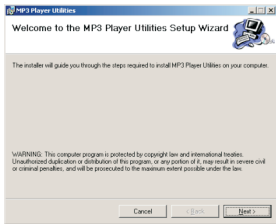
Install the USB driver:

Put the installation CD into CD-ROM Drive and then it will be installed automatically.

The following window will pop up:

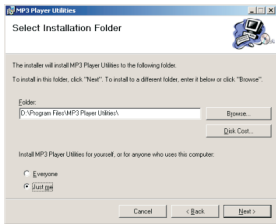


Click **Continue**, and the window below will pop up.

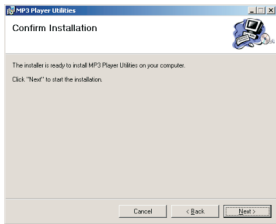


Click **Next** to continue

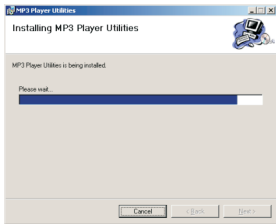




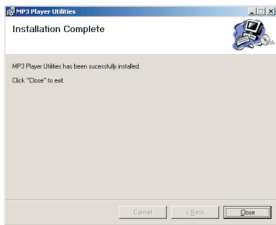
Select the installation folder and then click **Next**.



Click **Next** to start installation



Installation completed, and the window below will pop up

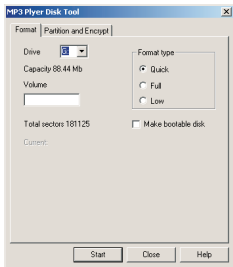


Click **Close** and restart your PC according to the PC requirement.

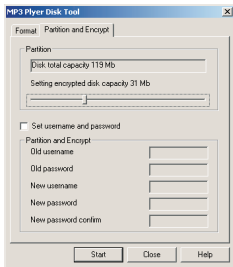
## USB Disk Partition and Encrypt

1. Turn on the MP3 player
2. Connect the MP3 player to PC (Please refer to **PC Connection**)
3. Click (Start) → (Program) → (MP3 Player Utilities) → (MP3 Player Disk Tool)

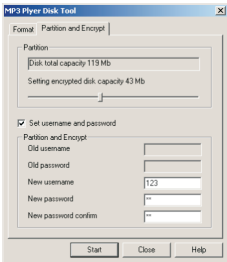
The following windows will pop up.



Select **Partition and Encrypt** and the window below will pop up.



Set suitable encrypted disk capacity.  
Set new username and new password,  
and then click **Start**.

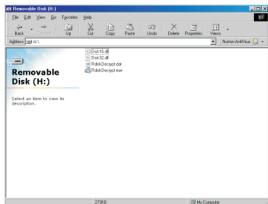


Partition completed, the window below will pop up.

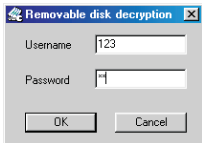


Click **OK**, and restart your PC according to PC requirement.

4. There will be two removable disks at this moment. The encrypted disk will show the following documents.



5. Click **RdiskDecrypt.exe**, and type in the correct username and password to open the disk.



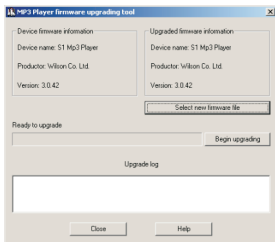
6. Correct username and password are needed to open the encrypted disk, whenever connect the MP3 player to the PC.



## Firmware upgrade

1. Turn on the MP3 player
2. Connect the MP3 player to PC(Please refer to **PC Connection**)
3. Click (Start)→ (Program)→ (MP3 Player Utilities) → (MP3 Player Update Tool)

The following window will pop up.



4. Click Select new firmware file, select new firmware (Please download from manufacturer's website)
5. Click Start to begin upgrading

#### **IV CAUTIONS**

1. Do not disassemble or change any part of the product that is not mentioned in this manual.
2. Do not pull or plug in the product with wet hands, which may cause short circuit of the product.
3. Do not expose the product to fire or excessive heat.
4. Do not expose the product to electromagnetic wave circumstances, which may cause malfunction of the product.
5. Ensure the USB plug is dry before connecting to computer to avoid damage by moisture.
6. Recharge the battery after power drained to prolong the battery life.

## V HELPFUL TIPS

Problem	Analysis	Solution
Unable to play MP3	Battery low	Recharge the battery
	Non standard MP3/WMA files	Delete this music, download standard MP3/WMA files
Unable to download music	USB cable broken or not connected properly.	Check the USB connection and reinsert
Unable to do voice recording	No space for more recording files	Delete some old recording files
No Drive Letter	The USB plug not connected or loose.	Check USB connection
	The Manager Software did not installed successfully.	Reinstall the Manager Software
	The PC motherboard does not support USB port.	Upgrade the motherboard driver
	MP3 player doesn't turn on.	Turn on the MP3 player
Lights of REC and MP3 flash at the same time	This would happen when there is no song or recording inside	Not a fault

Sound skips or resets	MP3 file made at compression level exceeding 320kbps.	Using lower compressing level to record the file into MP3 format.
	Wrong music format/ damaged music file	Delete this music, download correct music file
Buttons unworkable	Product fails to work properly	Press buttons of <b>⏮/V-</b> and <b>RANDOM/DEL</b> together to reset

## VI PRODUCT SPECIFICATIONS

Hardware	Media	Built in flash memory
	Capacity	128MB/256MB/512MB/1GB
	File system	FAT
Audio	Frequency range	20Hz~20KHz
	Earphone output	5mW + 5mW
	SNR	80dB
Music file	Supported Music file formats	MP3, WMA
	Bit rate	MP3:32Kbps~320Kbps WMA: 5Kbps~256Kbps
	Recording format	ADPCM
power	$\geq 230$ mAH macromolecule polymer Li-ion rechargeable battery	
other	Work temperature	-10°C ~ +40°C
	interface	Standard USB
	Recharging time	~2 hours (by USB)
	Music playtime	~8 hours (standard MP3 file)
	Operating System	No driver needed for the following OS: Windows ME / 2000 / XP Driver software needed for Windows 98 SE

## **THIS DEVICE COMPLIES WITH PART 15 OF THE FCC RULES.**

Operation is subject to the following two conditions:

- (1) This device may not cause harmful interference, and
- (2) This device must accept any interference received, including interference that may cause undesired operation.

### **NOTE:**

1. The manufacturer is not responsible for any radio or TV interference caused by unauthorized modifications to this equipment. Such modifications could void the User's authority to operate the equipment.

2. This equipment has been tested and found to comply with the limits for a Class B digital device, pursuant to Part 15 of the FCC Rules. These limits are designed to provide reasonable protection against harmful interference in a residential installation. This equipment generates, uses and can radiate radio frequency energy and, if not installed and used in accordance with the instructions, may cause harmful interference to radio communications. However, there is no guarantee that interference will not occur in a particular installation. If this equipment does cause harmful interference to radio or television reception, which can be determined by turning the equipment off and on, the user is encouraged to try to correct the interference by one or more of the following measures:

- Reorient or relocate the receiving antenna
- Increase the separation between the equipment and the receiver.
- Connect the equipment into an outlet on a circuit different from that to which the receiver is connected.
- Consult the dealer or an experienced radio/TV technician for help.

**ESD REMARK:**

In case of malfunction due to electrostatic discharge just reset the product (reconnect of power source maybe required) to resume normal operation.

